

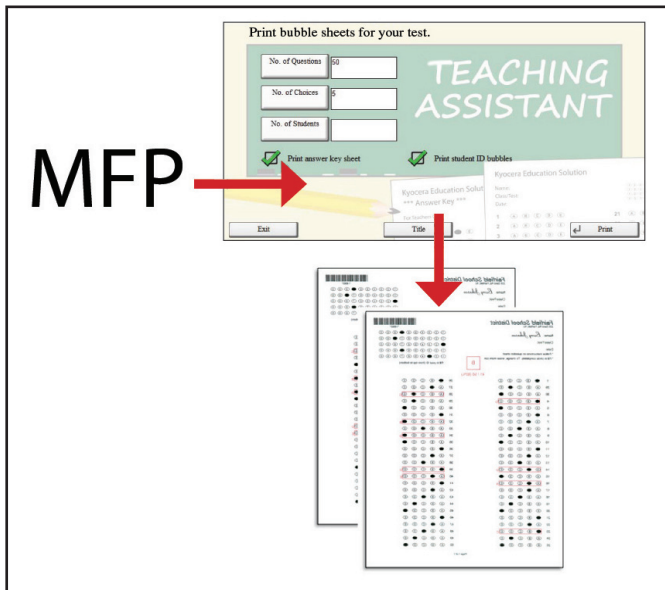


KYOCERA  
TEACHING  
ASSISTANT™



# STREAMLINE CLASSROOM WORKFLOW AND BOOST STUDENT ACHIEVEMENT.

SIMPLIFY PRINTING, COLLECTING AND ANALYZING MULTIPLE-CHOICE TESTS.



TEACHING ASSISTANT USES ECONOMICAL PLAIN PAPER TO GENERATE BUBBLE SHEETS, MAKING BUYING AND STOCKING EXPENSIVE, PRE-PRINTED SHEETS A THING OF THE PAST.

Educators are under continuous pressure to find new and innovative ways to improve student achievement while reducing cost. These initiatives are not unique to school districts. Every enterprise, from public and private schools to large corporations, must become more efficient. To assist in these mission critical initiatives KYOCERA has developed Teaching Assistant, a business application, powered by HyPAS, that transforms your KYOCERA MFP into an on-demand test creation, grading and analysis hub.

Specifically, Teaching Assistant simplifies the task of printing, collecting and analyzing multiple-choice test results using popular bubble-sheet forms. With Teaching Assistant, the MFP does the work allowing educators to concentrate on the students themselves, instead of the time-consuming, error-prone process of manual test grading. Designed as an embedded application that runs on the MFP, Teaching Assistant does not require network resources or IT support because there is no server software to install or PC to connect. Everything is managed directly from the MFP touch screen. Teachers and support staff enjoy intuitive walk-up access, where an unlimited number of bubble sheet forms are printed. After the forms are completed by the students, and scanned by Teaching Assistant, test scores and associated reports are immediately available; there's no wait! Comprehensive analytics are available as printed files, PDFs and CSVs for import to Microsoft Excel. You can even drill down to the 10 easiest and 10 most difficult questions, enabling educators to identify potential weaknesses, and gear classroom instruction accordingly.

Teaching Assistant is an embedded application for select KYOCERA MFPs that simplifies the task of creating, printing, collecting and analyzing multiple-choice test results using popular bubble-sheet forms. Tests can be created on-the-fly.

- › Teachers have immediate access to test results
- › By automating test workflow, teachers can spend more time with their students
- › Routing test results to e-mail saves paper, toner and energy
- › Test reports are accurate; human error is virtually non-existent

## HYPAS

KYOCERA's HyPAS (Hybrid Platform for Advanced Solutions) is a powerful and scalable software solution platform. Through direct enhancement of the MFP's core capabilities, to the integration with widely accepted software applications, HyPAS will enhance your specific document imaging needs, resulting in improved information sharing, resource optimization and document workflows.

Print answer sheets directly from the MFP panel. Test sheets are scanned into the application for grading. Users can also print and forward test scores and reports directly to an e-mail address – reducing paper, toner and energy consumption.

## HOW IT WORKS

### Creating a Test:

To open Teaching Assistant, the user selects the [Application] key on the device's control panel. The [Print Test] button is pressed to enable entry of student ID bubbles, the number of questions, choices and students. The green [Start] button initiates printing of the custom bubble sheets and an answer key. If using the Microsoft Excel template, the user can print test sheets with student names pre-populated. The tests and sheets are distributed to the students, who answer each multiple-choice question by shading the appropriate bubble on the form.

### Grading Completed Tests:

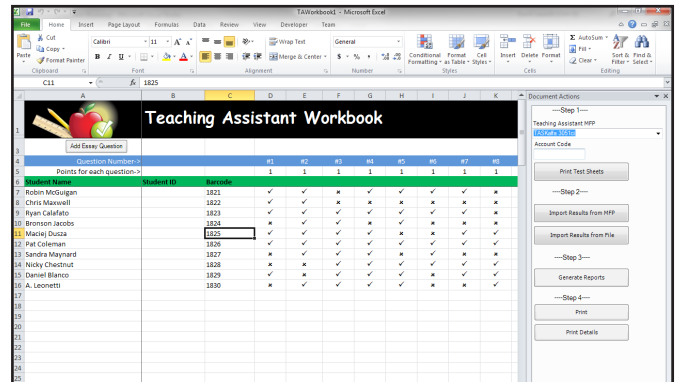
The completed bubble sheets and completed answer key are placed in the device's document feeder. The Teaching Assistant application is opened again, only now the [Grade Test] button is selected.

Teaching Assistant scans the sheets, scores each student and prepares a series of analytical and graphical PDF or CSV reports, with a choice to print, save to USB flash drive or e-mail the results. For added flexibility, the Teaching Assistant MS Excel template integration provides the ability to modify grading, add extra credit grades – even essay question scores are available! As added benefits, Teaching Assistant offers MS Excel integration, the ability to include essay questions, and capability of printing test sheets with student names. Detailed test data for each question brings additional functionality. To protect student confidentiality, all data related to the test is automatically cleared from the device after the user exits Teaching Assistant.

A turnkey solution to benchmark student performance, Teaching Assistant helps prepare students to meet local school and state-mandated goals. Beyond the K-12 classroom, Teaching Assistant is also a valuable tool for organizations that conduct virtually any internal or external training programs. Ideal for all educators and trainers, Teaching Assistant reduces the paperwork burden that otherwise distracts from the core mission – preparing our leaders of tomorrow.

For the latest on connectivity visit [www.kyoceradocumentsolutions.com/us](http://www.kyoceradocumentsolutions.com/us)  
Specifications and design are subject to change without notice.  
HyPAS and Teaching Assistant are trademarks of KYOCERA.  
All other trademarks are the property of their respective owners.

KYOCERA Document Solutions America, Inc. Headquarters: 225 Sand Road, Fairfield, NJ 07004-0008, USA  
©2013 KYOCERA Document Solutions America, Inc.



Teaching Assistant's Microsoft Excel integration provides advanced grading capability and comprehensive analytics

## TEACHING ASSISTANT BENEFITS

- ▶ Bubble sheets and answer key print on plain paper, eliminating the need for special media and scanning systems, lowering costs across the board
- ▶ Summary and Detail reports, including bar graphs, histograms and test statistics provide instructors with at-a-glance feedback on how students fared
- ▶ Productivity soars when time is no longer spent manually grading tests
- ▶ Tests can be created on demand. If select students are struggling in a particular subject area, teachers can create a test to fill specific learning gaps
- ▶ MS Excel integration, for advanced grading flexibility and the ability to print test sheets with student names
- ▶ Detailed test data for each question

## SYSTEM REQUIREMENTS

- ▶ Requires 2 available application slots on the MFP
- ▶ Export results to e-mail, CSV file, or PDF
- ▶ Device based application, network connectivity required for Microsoft® Excel integration only
- ▶ Microsoft Excel 2010 or higher



Authorized Dealer  
Choice Office Equipment  
630.390.7020  
[www.theChoice4biz.com](http://www.theChoice4biz.com)